



MSA	Size mm	Kg
08.100	195 x 150	2.450

Cast bench vice. Jaws width 60 mm. Maximal opening 63 mm.



MSA	Size mm	Kg
08.104	120 x 65	1.032

Removable Vice with fixing plate. The brass plate is fixed on the bench and the vice can be easily settled or removed thanks to the side lever. Jaws width 46 mm. Maximum opening 63 mm

**Spare Part :**

MSA	Item
08.104-A	Brass plate only



MSA	Size mm	Kg
08.500	120 x 75	0.435

Hand vice. Jaws width 40 mm. Maximal opening 30 mm.

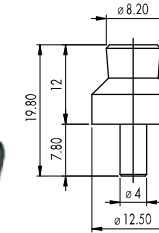


MSA	Size mm	Kg
08.502	14 x 14 x 67	0.070

Mini hand vice. Hardened steel jaws, width 14 mm. One of the jaws is equipped with maintaining grooves. Maximal opening 15 mm.

**Accessory :**

MSA	Item
08.503	Revolving base

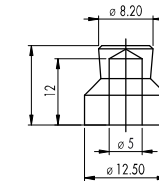


MSA	Size mm	Kg
08.001	65 x 45	0.073

Plastic and metal case holder with 4 nylon dies MSA 08.001-A.

**Replacement die :**

MSA	Item
08.001-A	Die only

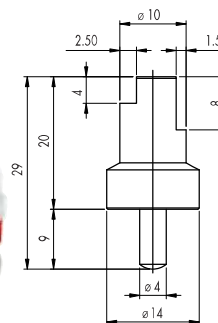


MSA	Size mm	Kg
08.002	83 x 45	0.192

Metal case holder with 4 nylon dies MSA 08.002-A driven on a 5 mm axe.

**Replacement die :**

MSA	Item
08.002-A	Die only

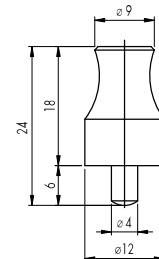


MSA	Maximal opening mm	Kg
07.374	70	0.160

Adjustable case holder for presses MSA 07.367 to 07.369. The delrin stacked dies are fitted in **reinforced pierced holes with a steel cylinder**. Delivered with 4 chucks MSA 07.374-A.

**Replacement die :**

MSA	Item
07.374-A	Die only



MSA	Maximal opening mm	Kg
07.360-A	70	0.110

Adjustable case holder, accessory for HOROTEC® presses MSA 07.360, 07.361, 07.362, 07.363, 07.364 and 07.365. Delivered with 4 dies MSA 07.360-B.

**Replacement die :**

MSA	Item
07.360-B	Die only

› See chapter PERF.

