

MSA	Size mm	Kg
10.499	60 x 80 x 110	0.415

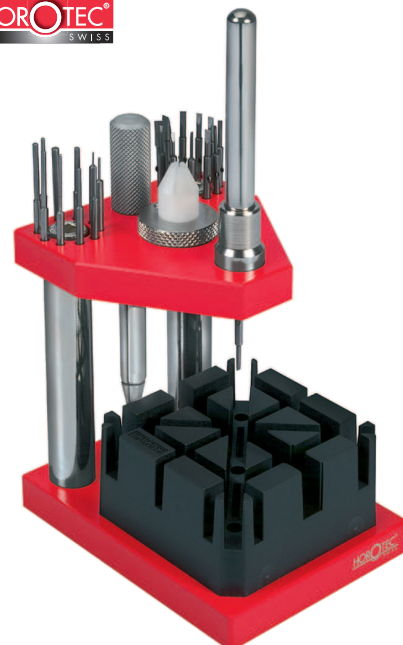
Pin bracelet adjusting tool. Simple version of press MSA 10.500.

Contents :

- 1 press
- 1 pin holder MSA 10.500-A
- 1 black slotted bracelet holder MSA 10.501
- 6 push/extract pins MSA 10.503-xxx (ø 0.40, 0.60, 0.80, 1.00, 1.50 and 2.00 mm) stored on top plate
- 1 support MSA 10.500-C.

Replacement parts for MSA 10.499 and 10.500:

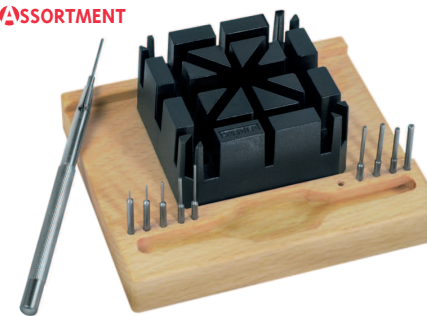
MSA	Elements	Kg
10.500-A	Pin holder, bore ø 2 mm, length 80 mm For MSA 10.499 and 10.500	0.021
10.500-C	Support for bracelet holder For MSA 10.499 and 10.500	0.003
10.500-E	Slotted delrin conical bracelet protection, to fit on MSA 10.505. For MSA 10.500	0.001
10.504	Knurled blade handle, length 84 mm For MSA 10.500	0.022
10.505	Counter screw blade holder for MSA 10.500, used for bracelet screws	0.013



MSA	Size mm	Kg
10.500	60 x 80 x 110	0.465

Press for rapidly assembling and disassembling **bracelet pins and screws**. Stand accessories easily accessible. The vertical guide allows a perfect alignment with bracelet screws and pins. It is equipped with a device that holds the pins holder, leaving the operator hands free.

Contents : 1 press, 1 broach MSA 10.500-A, 1 handle MSA 10.504, 1 bracelet holder MSA 10.501, 12 blades MSA 10.502-xxx (2 of each), 11 push/extract pins MSA 10.503-xxx, 1 support for bracelet holder MSA 10.500-C, 1 counter screw blade holder MSA 10.505 and 1 conical bracelet protection MSA 10.500-E.



MSA	Size mm	Kg
10.510	95 x 80 x 36	0.295

Bracelet pins remover set, includes 1 universal bracelet holder on a wooden base.

Contents : 1 pin holder MSA 10.510-A, 1 bracelet holder MSA 10.501, 10 pins MSA 10.503-xxx (ø 0.40, 0.60, 0.70, 0.80, 1.00, 1.10, 1.20, 1.40, 1.50, 2.00 mm) and 1 wooden base.



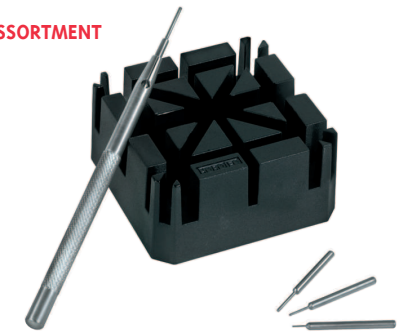
MSA	Length mm	Bore ø mm	Kg
10.510-A	80	2.00	0.029

Metal knurled pin remover. Accessory for MSA 10.510 and 10.511.



Replacement blades for MSA 10.500 (shank ø 2 mm):

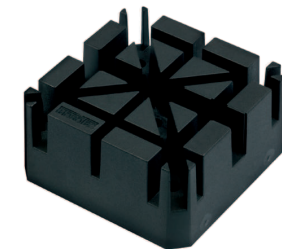
MSA	ø mm	MSA	ø mm
10.502-080	0.80	10.502-140	1.40
10.502-100	1.00	10.502-160	1.60
10.502-120	1.20	10.502-250	2.50



MSA	Size mm	Kg
10.511	95 x 80 x 36	0.040

Bracelet pins remover set, includes 1 universal bracelet holder.

Contents : 1 pin holder MSA 10.510-A, 1 bracelet holder MSA 10.501 and 4 pins MSA 10.503-xxx (ø 0.40, 0.60, 0.80, 1.00 mm).



MSA	Size mm	Kg
10.501	52 x 52 x 25	0.022

Universal black plastic bracelet holder, with 9 holes and 8 slots of 2.8 to 6.3 mm.

Accessory for MSA 10.499, 10.500, 10.510 and 10.511.



Replacement pins for MSA 10.499, 10.500, 10.510 and 10.511 (shank ø 2 mm):

MSA	ø mm	MSA	ø mm
10.503-040	0.40	10.503-110	1.10
10.503-060	0.60	10.503-120	1.20
10.503-070	0.70	10.503-140	1.40
10.503-080	0.80	10.503-150	1.50
10.503-090	0.90	10.503-200	2.00
10.503-100	1.00		



MSA	Size mm	Kg
10.513	55 x 35 x 22	0.050

Bracelet holder vice. Maximum bracelet thickness 9.90 mm. Compatible with presses MSA 10.499 and 10.500 illustrated on page 10 2.



MSA	Size mm	Kg
10.507	55 x 55 x 40	0.030

Black plastic bracelet holder, 22 slots, 3.5 to 9.0 mm.

ASSORTMENT



MSA	Size mm	Kg
10.530	50 x 45 x 25	0.073

Bracelet pins remover set with 1 Delrin® bracelet holder. Contents :

- 1 pin remover MSA 10.510-A
- 1 nylon bracelet holder
- 6 pins MSA 10.503-xxx (ø 0.40, 0.60, 0.80, 1.00, 1.50 and 2.00 mm).



MSA	Size mm	Kg
10.400	95 x 90 x 35	0.170

Bracelet holder for pushing and extracting pins from bracelets, mounted on a rubber anti-skid base. Delivered with 1 knurled handle (bore ø 2.50 mm), 6 pins (ø 0.45, 0.60, 0.80), 3 blades for screwing/unscrewing bracelet screws (ø 1.20, 2 x 2.50 mm) and 1 spring bars remover fork (width 2.50 mm).

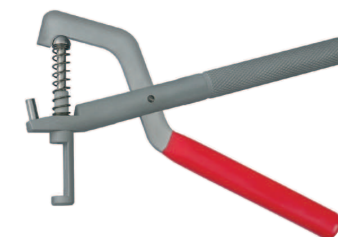


MSA	Size mm	Kg
10.001	ø 40 x 105	0.050

Tool for removing bracelet pins.

Replacement pin extractor :

MSA	ø mm
10.001-A	0.80



MSA	Length mm	Kg
10.003	145	0.089

Combination pliers for pushing/extracting bracelet pins. Delivered with 5 replacement pins ø 0.80 mm.

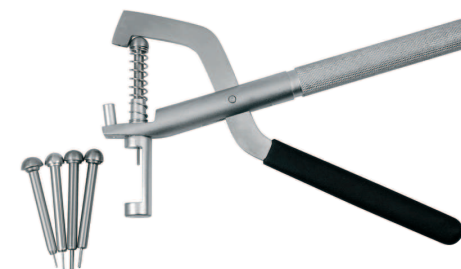
Replacement pin extractor :

MSA	Length mm	Body ø mm	ø mm
10.003-A	13.50	1.50	0.80



MSA	Length mm	Kg
10.004	150	0.204

Combination pliers for pushing/extracting bracelet pins. Delivered with 1 push pin MSA 10.004-100 (ø 1.00 mm).



MSA	Length mm	Kg
10.006	150	0.295

Combination pliers for pushing/extracting bracelet pins. Delivered with 5 replacement pins (ø 0.60, 0.80, 1.00, 1.20 and 1.50 mm) in a cardboard box.



Replacement pin extractors :

MSA	Length mm	ø mm	MSA	Length mm	ø mm
10.004-060	47.00	0.60	10.004-120	48.50	1.20
10.004-080	"	0.80	10.004-150	49.00	1.50
10.004-100	47.50	1.00			



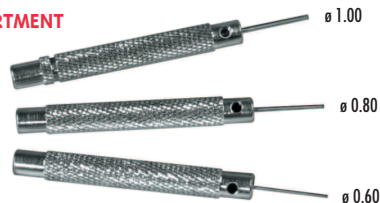
MSA	Size mm	Kg
10.005	60 x 20 x 25	0.015

Small black plastic tool for extracting bracelet pins. Delivered with 2 pins \varnothing 0.80 mm.

Replacement pin :

MSA	Length mm	Body \varnothing mm	\varnothing mm
10.005-A	31.40	2.50	0.80

ASSORTMENT



MSA	Kg
10.508	0.029

Assortment of 3 holders with mounted pins (\varnothing 0.60, 0.80 and 1.00 mm).



Replacement holders with mounted pin :

MSA	Handle \varnothing mm	Length mm	Pins \varnothing mm
10.508-060	5.20	52.60	0.60
10.508-080	"	52.20	0.80
10.508-100	5.00	52.60	1.00

Replacement pins :

MSA	\varnothing mm
10.509-060	0.60
10.509-080	0.80
10.509-100	1.00

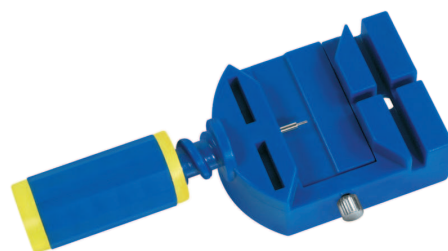


MSA	Size mm	Kg
10.532	55 x 22 x 25	0.016

Small black plastic tool for extracting bracelet pins. Delivered with 3 pins \varnothing 0.80 mm (2 x length 17 mm and 1 x length 20 mm).

Replacement pins :

MSA	Length mm	Body \varnothing mm	\varnothing mm
10.532-A	17	2.50	0.80
10.532-B	20	"	"



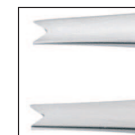
MSA	Size mm	Kg
10.531	110 x 50 x 25	0.066

Tool for removing pins.



Replacement pin :

MSA	\varnothing mm
10.531-A	0.80



MSA	Material	Length mm	Kg
10.306	Stainless steel, sand-blasted body, mirror polished tips (1)	120	0.022
10.307	Standard stainless steel	"	"

Tool for fitting and removing bracelet spring bars. Specially made to shorten both ends of the spring bars at the same time, to insert the well adjusted metal bracelet between watch case legs. Suitable for any spring bars length.



MSA	Length mm	Kg
10.301	105	0.007

Tool for fitting and removing spring bars. Knurled aluminium handle \varnothing 6 mm (includes graduated scale in millimetres) and interchangeable steel tips.

Replacement tips :

MSA	Elements
10.301-A	Tip \varnothing 0.70 mm
10.301-B	Fork width 2.00 mm



MSA	Length mm	Kg
10.302	135	0.034

Tool for fitting and removing spring bars. Knurled steel handle \varnothing 7 mm and steel tips easily interchangeable due to maintaining chucks.

Replacement tips :

MSA	Elements
10.302-A	Reversible tip \varnothing 0.80 mm and width 1.20 mm
10.302-B	Fork width 4.00 mm



MSA	Length mm	Kg
10.303	145	0.028

Tool for fitting and removing spring bars. Knurled steel handle and interchangeable hardened steel tips.

Replacement tips :

MSA	Elements
10.304-A	Tip \varnothing 0.80 mm
10.304-B	Fork width 3.00 mm



MSA	Length mm	Kg
10.304	147	0.025

Tool for fitting and removing spring bars. Aluminium hexagonal handle \varnothing 10 mm (includes 2 graduated scales in millimetres and inches) and interchangeable hardened steel tips.

Replacement tips :

MSA	Elements
10.304-A	Tip \varnothing 0.80 mm
10.304-B	Fork width 3.00 mm

PIN BRACELET TOOLS | SPRING BARS TOOLS | BRACELET TOOLS**» HOROTEC spring bars bending tool.**

MSA	Size mm	Kg
10.311	130 x 30 x 80	0.120

Horotec tool with lever of 110 mm allowing to easily bend some of the most thickest steel spring bars. Equipped with 2 spring bar rooms to give wished bending according to length, without damaging the spring bar.

» Bracelet tools.

MSA	Size mm	Kg
10.520	25 x 25 x 27	0.037

Small tool for bracelet screws, with 3 blades \varnothing 1.00, 1.40 and 3.00 mm. Metal anti-skid base. To be used as counter screw for bracelet linked with screw and a screwdriver.



MSA	Size mm	Kg
10.100	105 x 300 x 65	2.280

Tool with lever for cutting bracelets.