

ANVILS



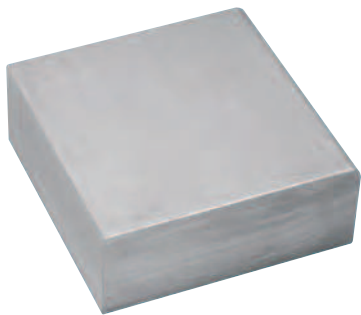
MSA	Size mm	Kg
31.001	110 x 68 x 75	0.670

Anvil with 2 horns made of hardened steel (55 HRC) and galvanized with cast iron base. For forging, riveting or stamping.



MSA	Size mm	Kg
31.003	105 x 30 x 42	0.550

Anvil with 2 horns made of forged and hardened steel (55HRC). For forging, riveting or stamping.



MSA	Size mm	Kg
31.050	50 x 50 x 20	0.350
31.051	60 x 60 x 20	0.570
31.052	90 x 80 x 20	1.000
31.053	100 x 100 x 20	1.570

Square anvil made of hardened rectified steel. For forging, riveting or stamping.